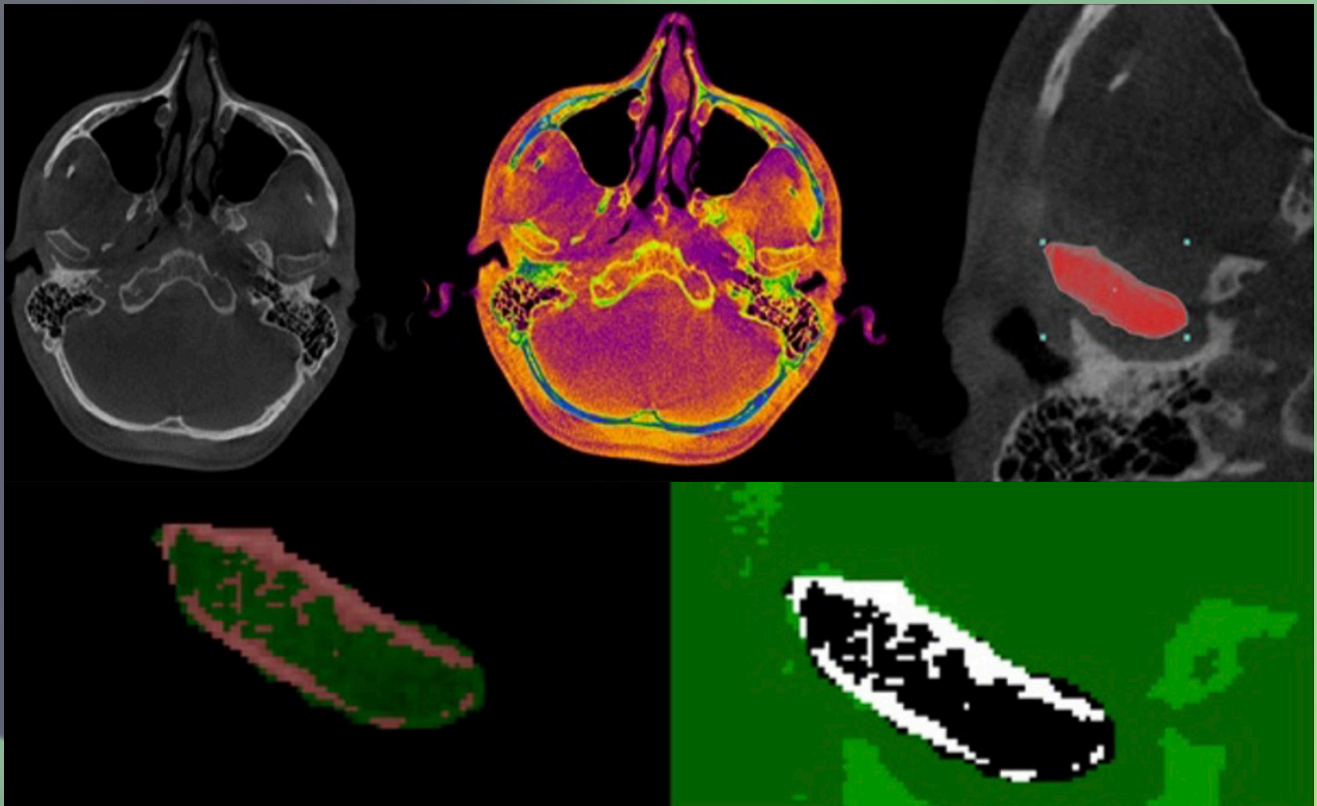




# Current Research *in* Dental Sciences

Formerly: Journal of the Dental Faculty of Atatürk University  
Official Journal of Atatürk University, Faculty of Dentistry

Volume 32 • Issue I • January 2022



# Current Research in Dental Sciences

## Owner

Recep ORBAK 

Department of Periodontology, Atatürk University, Faculty of Dentistry, Erzurum, Turkey

## Editor

Turgut DEMİR 

Department of Periodontology, Atatürk University, Faculty of Dentistry, Erzurum, Turkey

## Associate Editors

Adnan KILINÇ 


Department of Oral, Dental and Maxillofacial Surgery, Atatürk University, Faculty of Dentistry, Erzurum, Turkey

Adnan TEZEL 

Department of Periodontology, Ankara University, Faculty of Dentistry, Ankara, Turkey

Ertuğrul KARATAŞ 

Department of Endodontics, Atatürk University, Faculty of Dentistry, Erzurum, Turkey

Hüsamettin OKTAY 

Department of Orthodontics, Medipol University, Faculty of Dentistry, İstanbul, Turkey

Nihat KILIÇ 

Department of Endodontics, Atatürk University, Faculty of Dentistry, Erzurum, Turkey

Nuran YANIKOĞLU 

Department of Prosthetic Dentistry, Atatürk University, Faculty of Dentistry, Erzurum, Turkey

Nurcan ÖZAKAR İLDAY 

Department of Restorative Dentistry, Atatürk University, Faculty of Dentistry, Erzurum, Turkey

Özkan MİLOĞLU 

Department of Oral and Maxillofacial Radiology, Atatürk University, Faculty of Dentistry, Erzurum, Turkey

Pınar GÜL  - <https://avesis.atauni.edu.tr/dtpinar>

Department of Restorative Dentistry, Atatürk University, Faculty of Dentistry, Erzurum, Turkey

Sera ŞİMŞEK DERELİOĞLU 

Department of Pedodontics, Atatürk University, Faculty of Dentistry, Erzurum, Turkey

## Secretary

Lale EGE 

E-Mail: [dergidhf@atauni.edu.tr](mailto:dergidhf@atauni.edu.tr)



### Founder

İbrahim KARA

### General Manager

Ali ŞAHİN

### Publishing Director

İrem SOYSAL

### Editor

Gizem KAYAN TEKAÜT

### Publications Coordinators

Arzu YILDIRIM

Deniz KAYA

Bahar ALBAYRAK

Gamze BİLGİN

Irmak BERBEROĞLU

Alara ERGİN

Ebru BOZ

### Web Coordinator

Sinem Fehime KOZ

### Finance Coordinator

Elif YILDIZ ÇELİK

### Contact

Publisher: Atatürk University

Address: Atatürk University, Yakutiye, Erzurum, Turkey

Publishing Service: AVES

Address: Büyükdere Cad., 105/9 34394 Şişli, İstanbul, Turkey

Phone: +90 212 217 17 00

E-mail: [info@avesyayincilik.com](mailto:info@avesyayincilik.com)

Webpage: [www.avesyayincilik.com](http://www.avesyayincilik.com)

# Current Research in Dental Sciences

## AIMS AND SCOPE

Current Research in Dental Sciences (Curr Res Dent Sci) is an international, scientific, open access, online-only periodical published in accordance with independent, unbiased, and double-blinded peer-review principles. The journal is published quarterly publication in January, April, July, October. The publication languages of the journal are Turkish and English.

Current Research in Dental Sciences aims to contribute to the literature by publishing manuscripts at the highest scientific level on all fields of dentistry. The journal publishes original articles, invited reviews, rare case reports, and letters to the editors that are prepared in accordance with ethical guidelines. The scope of the journal includes but not limited to periodontal diseases, dental implants, oral pathology, oral and maxillofacial surgery, endodontics, oral diseases, restorative and esthetic dentistry.

The target audience of the journal includes specialists, researchers and professionals who working and interested in the field of dentistry and related disciplines.

Current Research in Dental Sciences currently indexed in TUBITAK ULAKBIM TR Index

The editorial and publication processes of the journal are shaped in accordance with the guidelines of the International Committee of Medical Journal Editors (ICMJE), World Association of Medical Editors (WAME), Council of Science Editors (CSE), Committee on Publication Ethics (COPE), European Association of Science Editors (EASE), and National Information Standards Organization (NISO). The journal is in conformity with the Principles of Transparency and Best Practice in Scholarly Publishing (doaj.org/bestpractice).

## Disclaimer

Statements or opinions expressed in the manuscripts published in the journal reflect the views of the author(s) and not the opinions of the editors, editorial board, and/or publisher; the editors, editorial board, and publisher disclaim any responsibility or liability for such materials.

## Open Access Statement

Current Research in Dental Sciences is an open access publication, and the journal's publication model is based on Budapest Access Initiative (BOAI) declaration. All published content is available online, free of charge at [dentistry-ataunipress.org](https://dentistry-ataunipress.org). The journal's content is licensed under a Creative Commons Attribution-NonCommercial-NoDerivatives (CC BY-NC-ND) 4.0 International License which permits third parties to share and adapt the content for non-commercial purposes by giving the appropriate credit to the original work.

You can find the current version of the Instructions to Authors at <https://dentistry-ataunipress.org/>.

**Editor in Chief:** Turgut Demir

**Address:** Atatürk University, Faculty of Dentistry, Erzurum, Turkey

**E-mail:** [turgut@atauni.edu.tr](mailto:turgut@atauni.edu.tr)

**Publisher:** Atatürk University

**Address:** Atatürk University, Yakutiye, Erzurum, Turkey

**Publishing Service:** AVES

**Address:** Büyükdere Cad., 105/9 34394 Şişli, İstanbul, Turkey

**Phone:** +90 212 217 17 00

**E-mail:** [info@avesyayincilik.com](mailto:info@avesyayincilik.com)

**Webpage:** [www.avesyayincilik.com](http://www.avesyayincilik.com)

# Current Research in Dental Sciences

## CONTENTS

### RESEARCH ARTICLES

Evaluation of online learning process of intern dental students during the Covid-19 pandemic period: A survey Gaye KESER, Filiz NAMDAR PEKİNER.....	1
Evaluation of mandibular molar tooth region morphology with cone-beam computed tomography to guide dental implant planning: A retrospective radioanatomical study Sevda KURT BAYRAKDAR, Elif BİLGİR.....	5
Evaluation of the shear bond strength of fissure sealant materials containing bioactive compounds Zeynep Ekin KILINÇ, Fevzi KAVRIK, Ebru KÜÇÜKYILMAZ.....	11
Evaluation of a group of Turkish family physicians' attitudes and approaches about early childhood caries Elif KARDEŞ, Fatma SARAÇ, Periş ÇELİKEL, Sera ŞİMŞEK DERELİOĞLU, Özgür DEMİR CİNİSLİ.....	17
The effect of tooth brushing on surface roughness in different restorative materials used in pediatric dentistry Berna ERTÜRK, Ebru HAZAR BODRUMLU.....	23
Effect of dental caries on dental age and development in adolescents between 12-15 years Berkant SEZER, Burak ÇARIKÇIOĞLU.....	29
Cytotoxicity of resin modified glass ionomer cements on dental pulp stem cells Şeyma KESKİN, Fatih ŞENGÜL.....	34
The effect of different surface decontamination procedures on bond strength values of CAD/CAM restoratives Elif İlgi SANCAK, Neslihan TEKÇE.....	38
Analysis of bristle end morphology of different toothbrushes by stereo microscope - in vitro study Gül YILDIZ TELATAR, M. Gamze ATICI BEDİR, Fatih BEDİR.....	44
Comparative evaluation of cyclic fatigue resistance of three different nickel-titanium rotary instruments at body temperature Zeliha ÖZTÜRK, Şeyda ERŞAHAN, Yelda Erdem HEPSENOĞLU, Didem Ekiz, Can TOPKARA.....	49
Effect of alexidine dihydrochloride on the bond strength of resin-based sealer to dentin Emine ODABAŞI TEZER, Meltem DARTAR ÖZTAN.....	53
Evaluation of pain felt by patients during orthodontic diagnostic material collection and direct bonding procedures Saadet ÇINARSOY CİĞERİM, Ahmet KARAMAN.....	58
Comparison of tmj morphology in orthodontic malocclusions using cone-beam computed tomography Mert OCAK, Mehmet Eray KOLSUZ.....	63
The effects of different vertical growth on facial morphology in class II cases Barçın ERÖZ DİLAVER, Şeyma GÜNDOĞDU, Ali KİKİ.....	67
Effect of Covid 19 pandemic on Recep Tayyip Erdoğan University Dentistry Faculty students Zeynep YEŞİL DUYMUŞ, Bahriye Bahar TÜFEKÇİ.....	71
Effect of povidone iodine at different concentrations on the color stability of hybrid CAD/CAM material Gaye SAĞLAM.....	73
Evaluation of clinical success of prefabricated metal post-core restorations: 5 year retrospective study Elif KABACIOĞLU, Ceren KÜÇÜK, Rifat GÖZNELİ.....	80
Soft to hard tissue ratios after bimaxillary orthognathic surgery in class III patients Kevser KURT DEMİRİSOY, Gökmen KURT.....	85

## REVIEWS

<b>Identification and gender determination in forensic dentistry</b> Hazal KARSLIOĞLU, Mesude ÇITIR.....	92
<b>Ozone therapy in dentistry</b> Merve SARI .....	100
<b>The effect of psychotrop drugs in bruxism ethiology and treatment: An overview of bruxism in the light of information</b> Özkan MİLOĞLU, Ahmet Berhan YILMAZ, Mustafa Taha GÜLLER, Betül SUBAŞI AKSAKAL .....	108
<b>Resin matrix ceramics-an overview</b> Elif Melike AKARCA, Dilara ŞAHİN, Ragibe Şenay CANA.....	114
<b>CASE REPORTS</b>	
<b>Fused teeth that are maxillary central incisor with supernumerary and its dental treatment</b> Sena KAŞIKÇI, Emre BODRURLU.....	119
<b>Surgical treatment of an extraoral fistula developing due to the left maxillary first molar tooth of which endodontic treatment was performed and infection could not be eliminated</b> Büşra KOÇ, Büşra Melda KENGEL, Esra MAVİ .....	124
<b>2-Year follow-up of bilateral immediate autotransplantation</b> Ferhat AYRANCI, Hasan AKPINAR .....	128